

BC Forest Bioeconomy Context

Linda Coady, President & CEO, COFI

November 2023



BC COUNCIL
OF FOREST
INDUSTRIES

An aerial photograph of a vast, dense evergreen forest, likely a spruce or fir forest, covering a mountainous landscape. The trees are tightly packed, creating a rich green texture across the entire scene. The lighting suggests a bright, sunny day, with some areas appearing slightly brighter than others due to the canopy's density.

**COFI MEMBERS ARE LEADERS IN
SUSTAINABLE FOREST MANAGEMENT**



PRODUCING THE LOW CARBON, VALUE-ADDED PRODUCTS THE WORLD NEEDS





**COMMITTED TO RESPECTING INDIGENOUS RIGHTS
AND ADVANCING RECONCILIATION**



MAJOR POLICY TRANSITIONS UNDERWAY

- DRIPA Implementation & Indigenous Forest Revenue Sharing
- Modernizing Land Use & Forest Landscape Planning
- Old Growth Protection and Management (Strategic Review & Action Plan)
- Framework on Biodiversity & Ecosystem Health
- Value Added Manufacturing & Innovation
- CleanBC & Net-Zero
- Wildfire mitigation

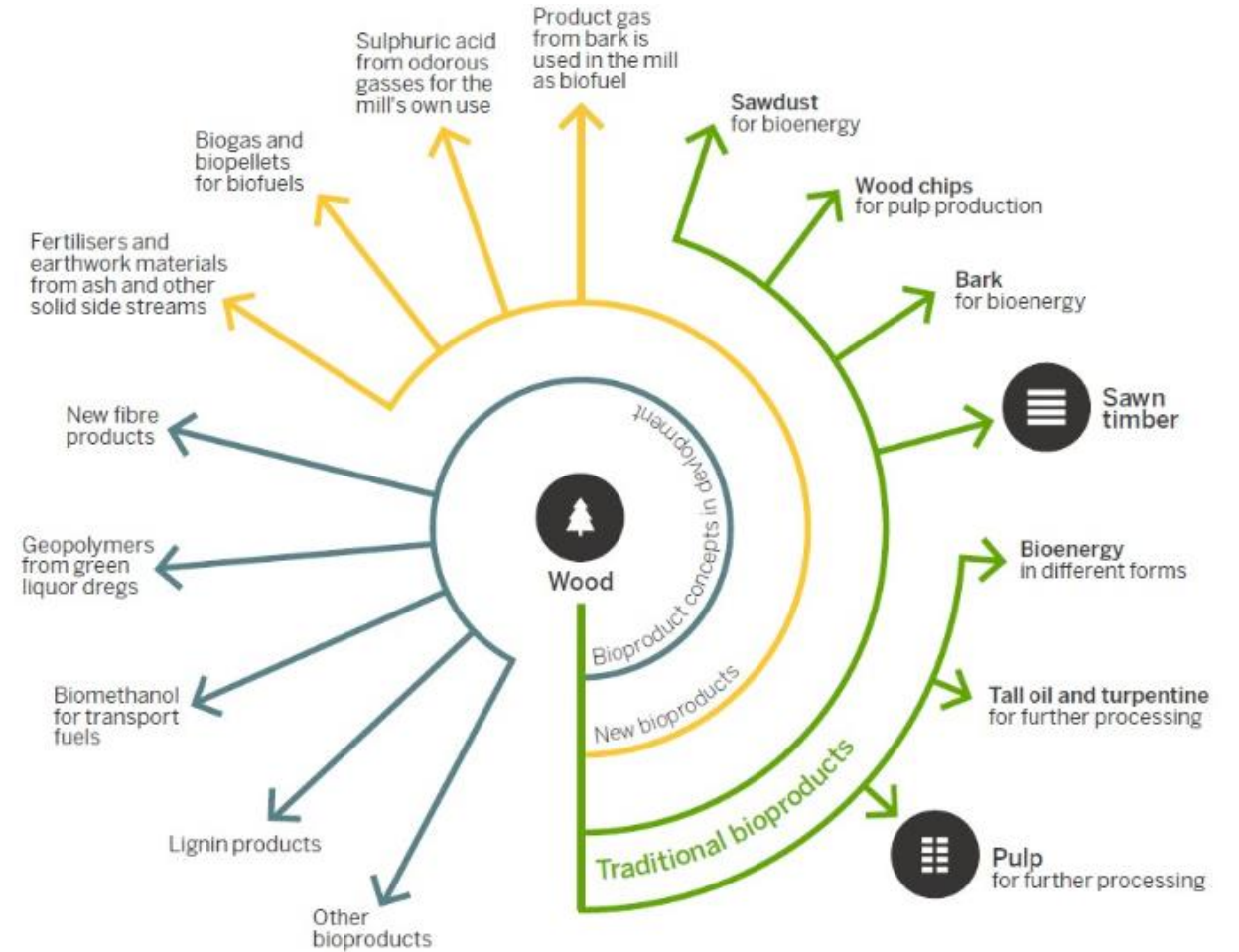


BUILDING A FOREST SECTOR ROADMAP

Working together to
develop pathways for a
sustainable forest industry
in the net-zero economy.

Value Added Accelerator

Housing and Climate
Workshop





THANK YOU



BC COUNCIL
OF FOREST
INDUSTRIES

www.cofi.org