

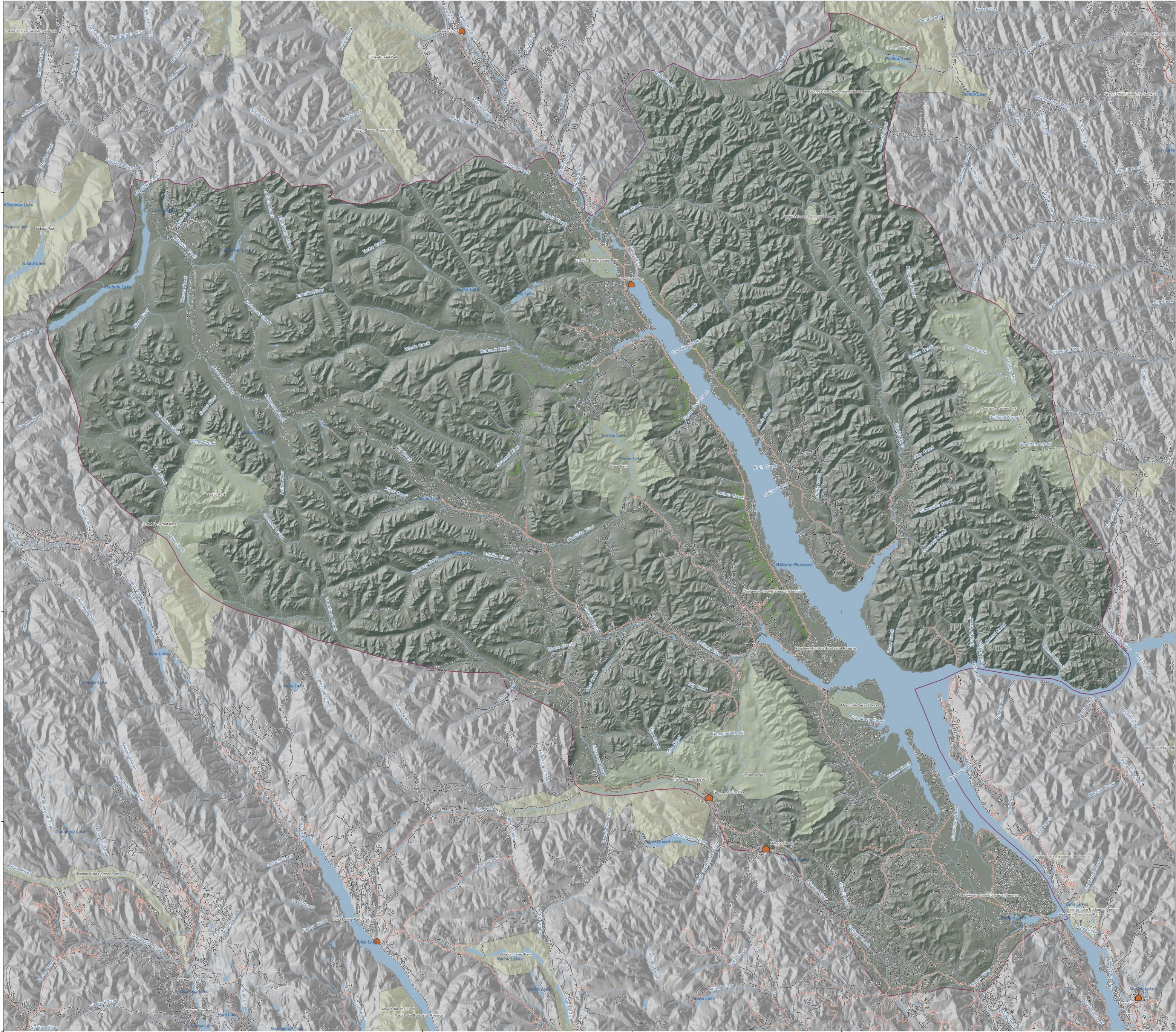
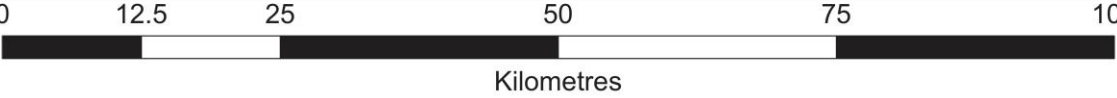
RENEWABLE ENERGY FOR TSAY KEH DENE NATION

REMOTE COMMUNITY
RE-ELECTRIFICATION



Tsay Keh Dene - Community

Tsay Keh Dene Traditional Territory Overview Map



Legend

- BC Communities
- Forest Service Road
- Road Permit
- Special Use Permit, Forest
- Special Use Permit, Non-Forest
- Highways
- Overgrown Roads
- TKD Traditional Territory
- Streams
- Lakes & Rivers
- Parks

Produced By: Dana Schwehr
Tsay Keh Dene Nation
Lands, Resources, & Treaty Operations
Date: June 16, 2017
Scale: 1:300,000
Projection: Albers Equal Area Conic







WOODY DEBRIS

COMMON
RESERVOIR
ISSUE





World's Largest Tree Crusher

The World's Largest Tree Crusher
Mackenzie BC circa 1965





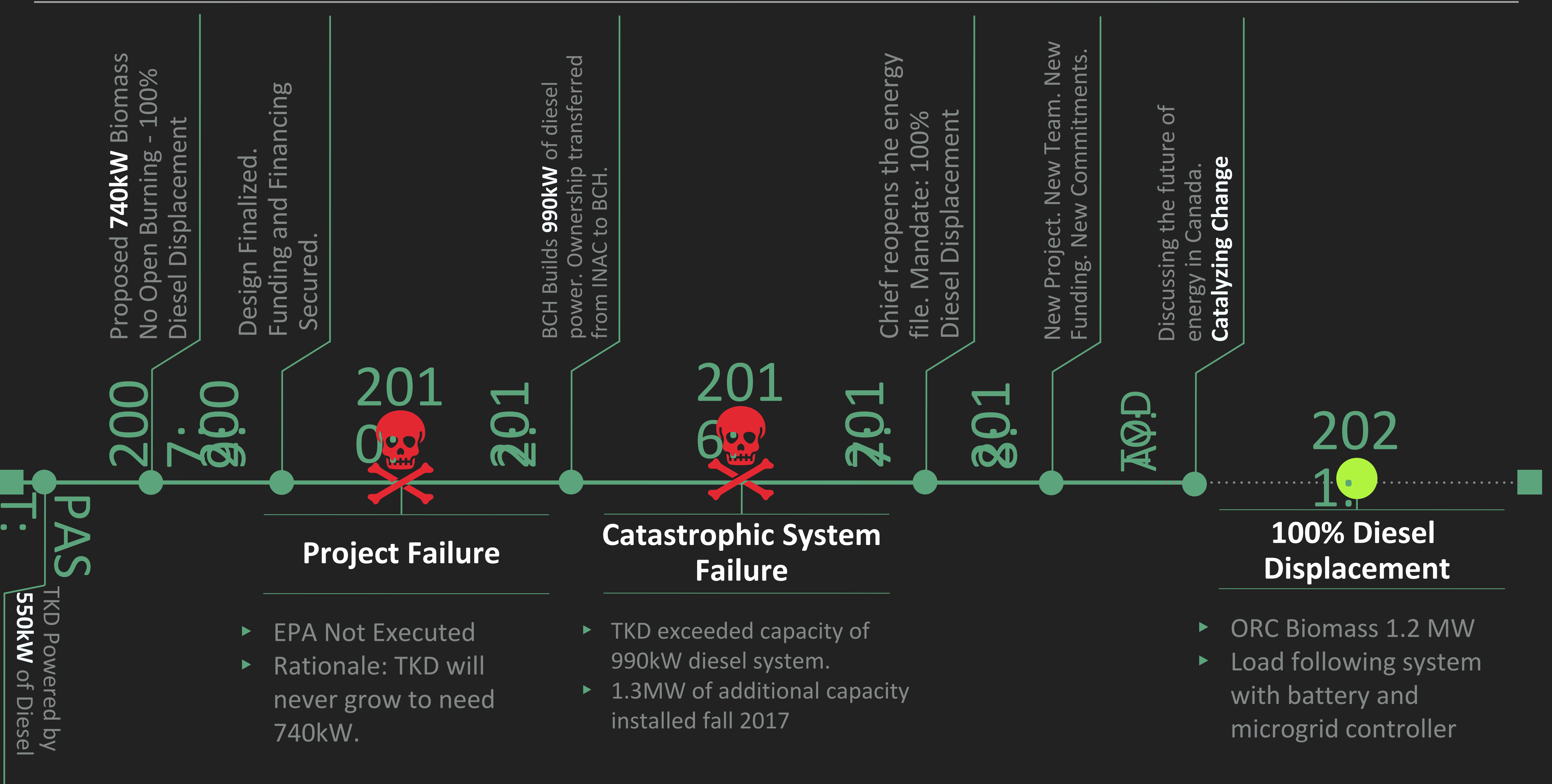




DEBRIS MANAGEMENT

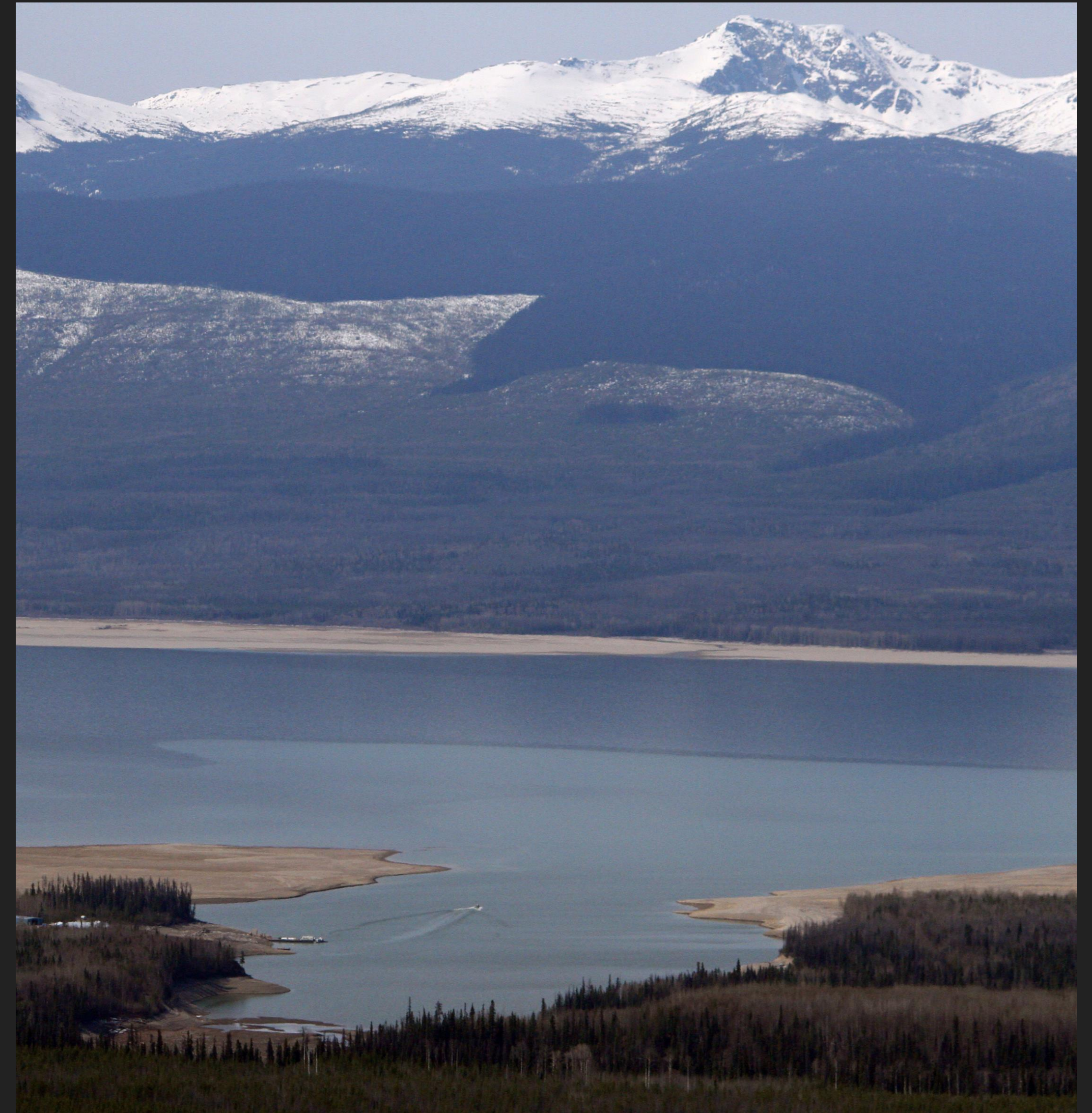
- ▶ From 2008 - 2018:
 - ▶ Piled 800,000+ cubic meters of woody debris.
 - ▶ 2500+ humongous piles.
- ▶ Chief refused to slash-burn the wood - sights set on clean energy.
 - ▶ In 2015 open burning commenced because of immense pressure to deal with the piles before they became a permanent habitat structure.
 - ▶ Over 2500 piles were burned from 2015 to 2018

REMOTE COMMUNITY RE-ELECTRIFICATION



THE FUTURE:

- ▶ Energy independence and all it's direct and ancillary benefits.
- ▶ Meet and exceed both federal and provincial climate and carbon policies.
- ▶ Creates an economy where virtually no economy exists.
- ▶ Hundreds of thousands of cubic meters of reservoir debris.
- ▶ Displace diesel.



UPDATE AND NEXT STEPS:

- ▶ CERRC funding awarded from NR Can.
- ▶ Finish EPA negotiations - change the procrustean view espoused by the utility.
- ▶ Financial Close.
- ▶ Capacity training.
- ▶ Built it, commission it, operate it – change a community forever.



REMOTE COMMUNITY RE-ELECTRIFICATION

THANK YOU.